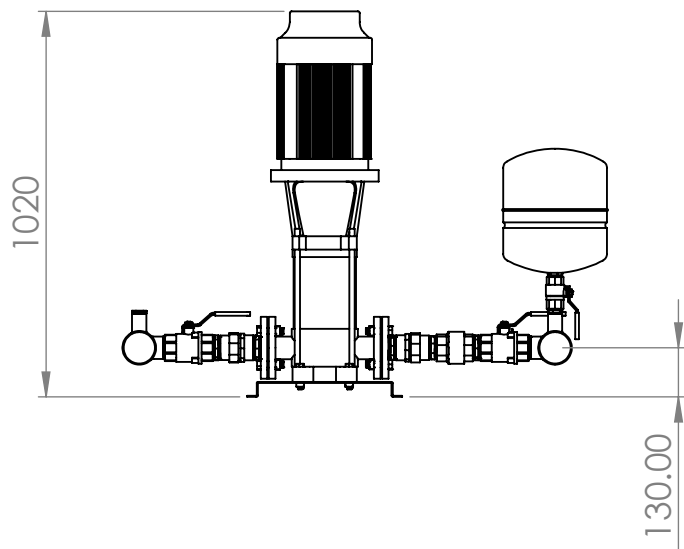
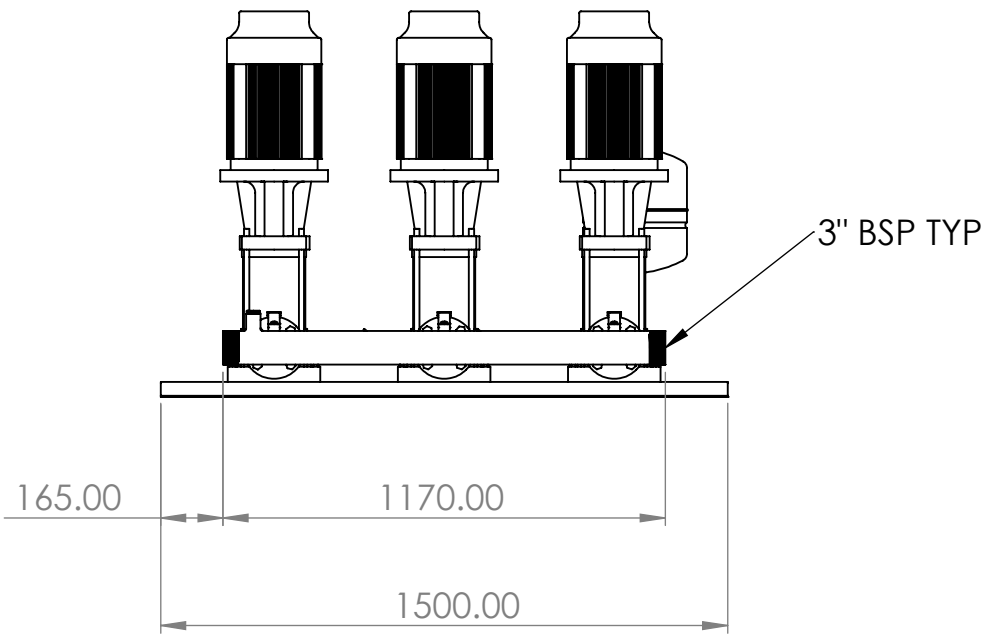
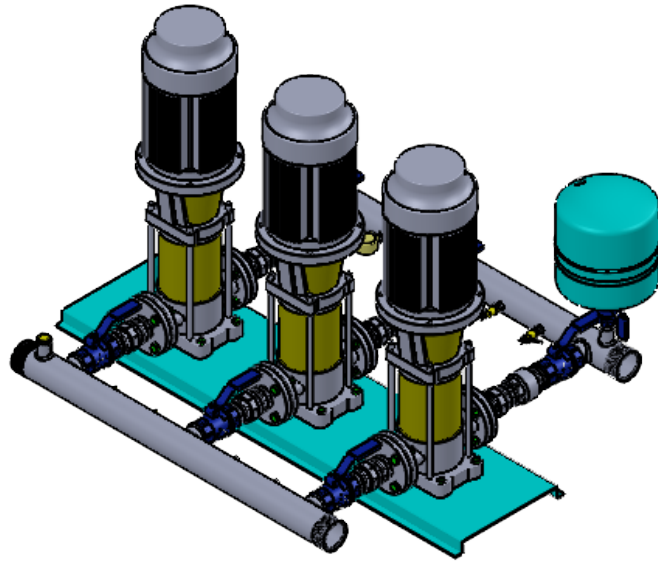
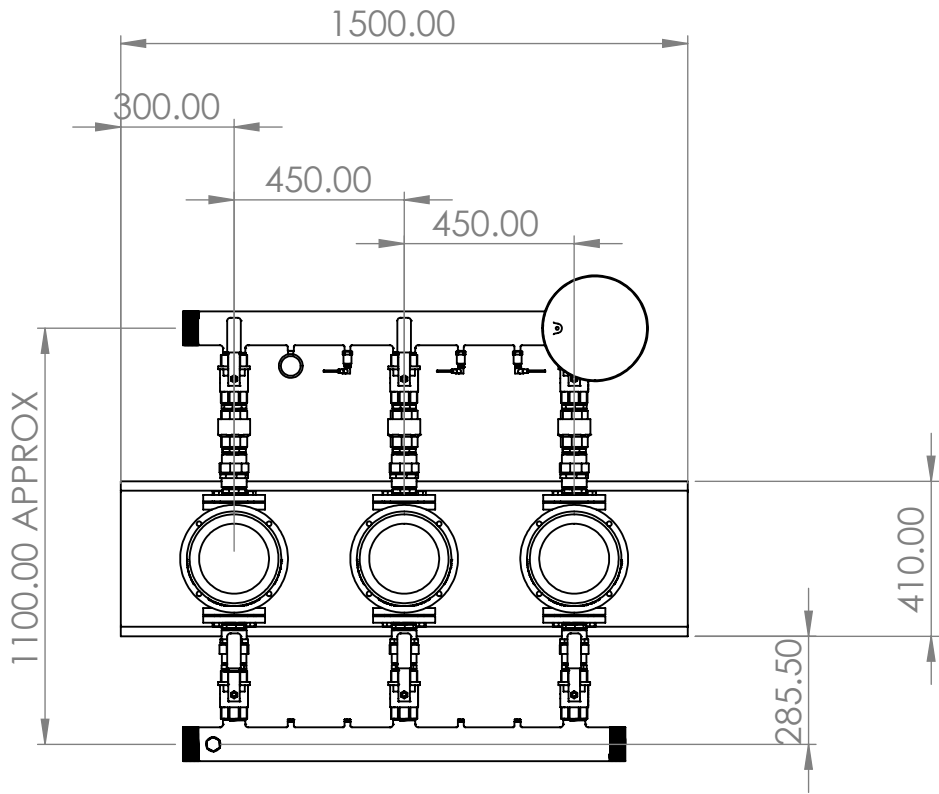


CAD FILE: P:\Engineering\MECHANICAL\PUMPS\MULTI STAGE PUMPS\3D DRAWINGS\BIA 3VMS15-5T\BIA 3VMS 15-6T

NOTE: THIS DRAWING SHALL NOT BE USED FOR SCALING PURPOSES. ALL DIMENSIONS MUST BE VERIFIED.
DIRECT ANY DISCREPANCIES OR UNCERTAINTIES TO WHITE INTERNATIONAL.

WEIGHT: Kg

- NOTES:
1. REMOVE ALL BURRS, SHARP EDGES AND WELD SPLATTER
 2. ALL FLANGES TO BE FLAT, SQUARE AND PARALLEL

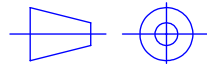


-	-	-	-	-	TO BE MODIFIED ON SW ONLY	DRN.	M H	29-04-2025
-	-	-	-	-	DRAWN SCALE: 1:1	CHK.	-	29-04-2025
-	-	-	-	-	PLOT SCALE: 1:20@ A3	SURFACE FINISH: -		
B	ISSUED FOR MANUFACTURE	M H	29-04-2025	-	29-04-2025			
A	ISSUED FOR APPROVAL	M H	29-04-2025	-	29-04-2025	MATERIAL: N/A		
REV.	DESCRIPTION	DRN	DATE	CHK.	DATE.			

TOLERANCES
ASSEMBLY DIMENSIONS ± 3 mm
FABRICATED DIMENSIONS ± 2 mm
MACHINING DIMENSIONS ± 0.125 mm
UNLESS OTHERWISE SPECIFIED



59 EXPORT DRIVE, BROOKLYN VIC 3012
60 ASHFORD AVE, MILPERRA NSW 2214
UNIT 8/235 CAMBOON RD, MALAGA WA 6090
UNIT 2/255 CHRISTENSEN RD, STAPYLTON QLD 4207
EMAIL: sales@wellcross.com.au



THIS DRAWING AND DESIGN REMAIN THE PROPERTY OF
WELLING & CROSSLEY PTY. LTD. A.B.N. 61 005 690 273.
THIS DRAWING AND DESIGN CAN NOT BE COPIED OR
ALTERED IN ANY WAY WITHOUT PRIOR WRITTEN APPROVAL
FROM WELLING & CROSSLEY PTY. LTD.
THIS DRAWING AND ALL COPIES, HARD & SOFT MUST BE
RETURNED TO WELLING & CROSSLEY PTY. LTD. UPON
REQUEST FROM WELLING & CROSSLEY PTY. LTD.

TITLE: BIANCO NXT VERTICAL MULTI
STAGE PUMP ASSY
BIA-3VMS 16/6T

DRG No: BIA 3VMS 15-6T

SHEET 1 OF 1
REV B